



## KIRKBY 246 | NORAH

\*HOUSE ONLY TO SUIT MINIMUM 18M FRONTAGE

# \$324,448

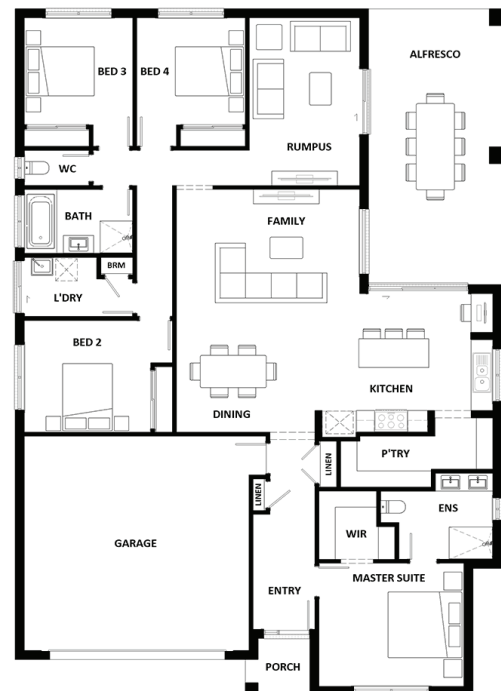
Façade picture is for illustration purpose only  
and may not be reflected in the price

### THE OUTLOOK AT CEDARVALE



### FEATURED INCLUSIONS

- Lifetime Structural Guarantee
- Site Allowance to H class soil
- Includes Building & Plumbing Applications and Permits
- Truecore Steel Frame & Trusses
- Colorbond Roof, Fascia & Gutter
- Covenant Compliant Façade
- Plain Concrete Alfresco Slab (Plan Dependent)
- In ground 31500l water tank with pump
- 2550mm Ceiling Height
- Generous electrical allowance
- Omega Kitchen Appliances
- 20mm Essastone to Kitchen, Ensuite & Bathroom
- Tiles or Vinyl Plank & Carpet Throughout
- 1200mm wide front door
- Fujitsu ducted air conditioning
- HSTP system installed and connected



Terms and conditions apply. Hotondo Homes Jimboomba | QBCC Licence No: 15061493

**Daniel Gimm**

Sales Consultant - 0432 773 101

daniel@hotondojimboomba.com.au



# Hotondo Homes